

## Wireless Communication Mesh Network (WiCM)

# Mesh Network Node – SCALE v4.1

### TECHNICAL SUPPORT

Schafer provides in-house engineering expertise to support custom robotic and communication product development and integration with access to ISO 9001 and AS 9100 Certified facilities.

### NETWORK SOLUTIONS

A mobile ad hoc mesh network open architecture supports interoperability by providing a common radio, waveform, and data protocol that allows different platforms to operate together and exchange all forms of digital data.

### OCU SOLUTIONS

Situational awareness software is operable on a Windows XP laptop or other computer to allow operators to interact with robotic platforms, airborne vehicles, and sensors networks. Displays show node location, network topology, map views, icons/images, quality of service, real-time video. Users can communicate by instant messaging (IM), voice-over-IP (VOIP), and exchange data files.

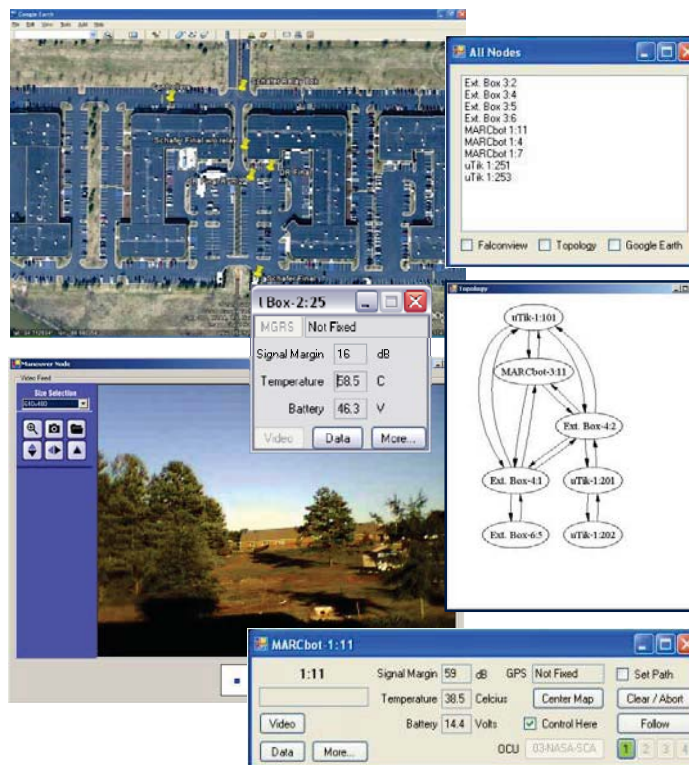
## Enhanced Situational Awareness Software – SCALE v4.1 Schafer Part No.: WICM4.1-SCALE

SCALE v4.1 Software offers enhanced situational awareness through the graphical user interface and the customized map displays when integrated with the WiCM Mesh Network.

The Secure Communications Ad Hoc Layered Encrypted (SCALE) mesh network will support simultaneous transmission of real-time video, voice, data and situational awareness information (Using WiCM Network Communication Nodes and SCALE v4.1 Software loaded onto the laptop). Multiple XP Windows are available to the operator to organize the information available on the Mesh Network.

Some of the display windows available include:

- All Nodes to identify active nodes in the mesh network.
- Mesh Network Node Details provides Node health and status.
- Google Earth Map display showing GPS location of all Nodes.
- Network Topology display showing network connections.
- Real-Time Video display from selected Nodes.



### CONTACT US

For more information on any of our products or services please visit us on the Web or contact us directly.

# Mesh Network Node – SCALE v4.1

Wireless Communication  
Mesh Network (WiCM)

**Enhanced Situational Awareness Software – SCALE v4.1**  
Schafer Part No.: WICM4.1-SCALE

## System Specifications

Data Interface:	Windows XP, Data Protocol IPv4
Security:	WEP Layer 2 or AES 128 Bit Layer 2 OpenVPN/OpenSSL Layer 3 Available
GPS Data Protocol:	NMEA
Video Protocol:	IP Optional Video Encoder/Decoder Converts NTSC to H.264
Software:	Embedded Linux OS on Robot/Node Windows XP on Laptop

### Call About Customization

*Custom Products Are Available, Please Contact Advanced Program for Details.*

### SERVICES AVAILABLE:

- Technical Support
- Installation and Setup
- Maintenance
- Integration and Testing
- Application Support
- Hardware Support
- Software Support
- Customization
- Guaranteed Warranty

### CONTACT US

For more information on any of our products or services please visit us on the Web or contact us directly.